

Topic: Forest School – Den building

Year 2

Prior learning

- Learn how to build a mini fairy shelter
- Hibernation homes
- Know how to build a lean-to shelter

Key knowledge I will understand

- Understand different structures of hibernation homes, such as hedgehog and wildlife stacks.
- How to build a mini tepee structure.
- How to build a mini A-frame structure.

Key vocabulary

- **Shelter** – a place giving temporary protection, used for safety and retreat.
- **Structure** – a specific arrangement of things.
- **Camouflage** – to hide or disguise something.
- **Hibernation** – a way animals conserve energy to survive adverse weather conditions or lack of food. Commonly occurs during winter months.
- **Tepee** – a cone-shaped structure.
- **A-frame** – a triangle-shaped shelter, designed to retain body heat.
- **Free-standing** – standing alone or on its own foundation, free of support or attachment.

How I will investigate

- Design and create a hedgehog house or wildlife stack (linked to hibernation topic).
- Find a good Y-shape stick and practise building a free-standing structure.
- Build a mini tepee, focusing on shape and structure.
- Build a mini A-frame structure.
- Build a mini shelter -
  1. Build a shelter for the characters in The Gruffalo, e.g., a house for a mouse.
  2. Create a hibernation hotel with a variety of materials.
- Create a fairy tale village, possibly high up in a tree (link to fairy tales).

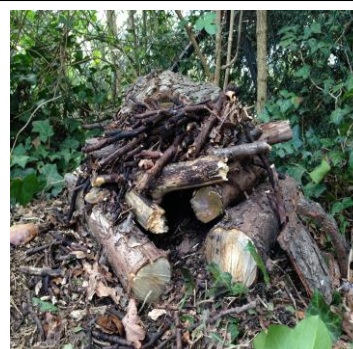
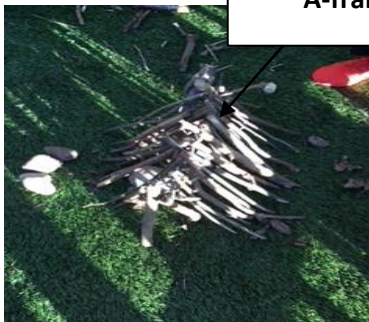
Woodland Tepee



Wildlife stack



A-frame



Natural hedgehog house